

TABLE OF DIMENSIONS

BURNDY CATALOG NO	CONTACTS PER ROW	TOTAL NO. CONTACTS	NO. OF CONTACT PAIRS		D	E	G ±.008 [0.20]	K	L
			BAY A	BAY B					
CEE2X56S-V3Z14	56	112	11	45	.590 [14.99]	2.290 [58.17]	3.140 [79.76]	---	2.350 [59.69]
CEE2X75S-V3Z14	75	150	37	38	1.890 [48.01]	1.940 [49.28]	4.090 [103.89]	---	2.000 [50.80]
CEE2X91S-V7Z14	91	182	42	49	2.140 [54.36]	2.490 [63.25]	4.890 [124.21]	---	2.550 [64.77]
CEE2X91S-V11Z14	91	182	42	49	2.140 [54.36]	2.490 [63.25]	4.890 [124.21]	2.200 [55.88]	2.550 [64.77]
CEE2X91SC-V7Z14	91	182	42	49	2.140 [54.36]	2.490 [63.25]	4.890 [124.21]	---	2.550 [64.77]
CEE2X91SC-V11Z14	91	182	42	49	2.140 [54.36]	2.490 [63.25]	4.890 [124.21]	2.200 [55.88]	2.550 [64.77]

- 150-453/455 -

CONNECTOR SERIES
CARD EDGE

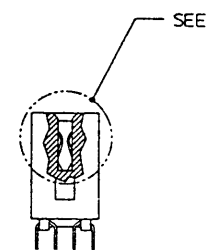
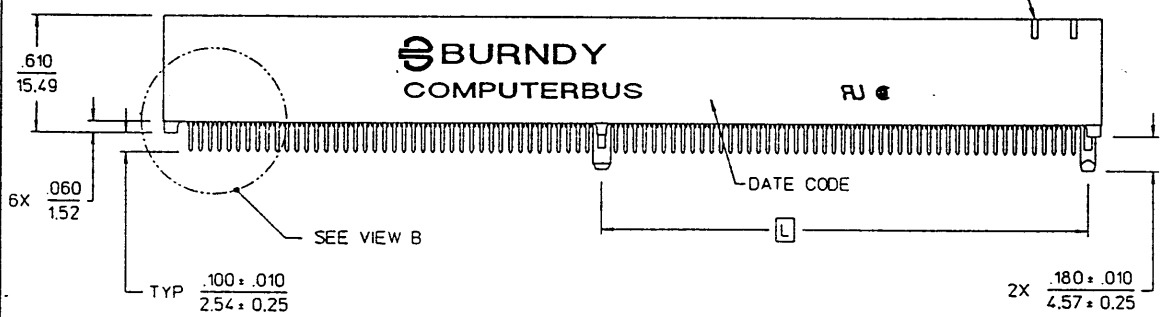
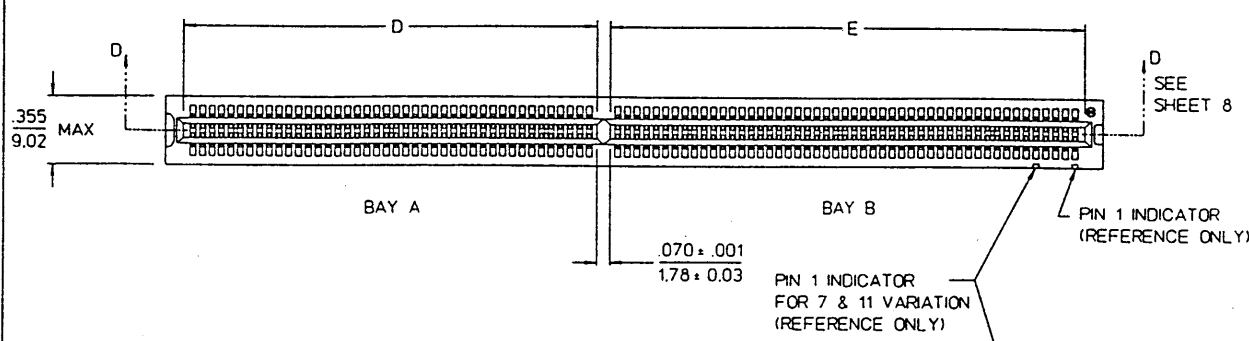
CONTACT SPACING
E = .050 [1.27] PITCH

NUMBER OF ROWS

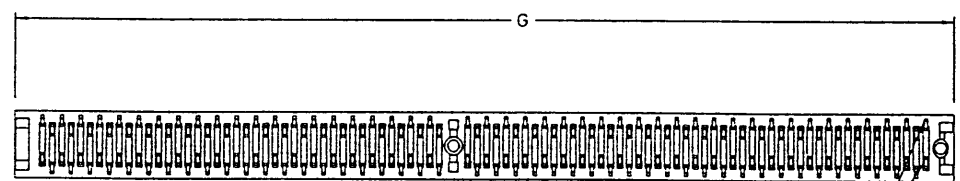
NUMBER OF CONTACTS
PER ROW: 56, 66, 70,
75, 91, 97, 101, 106,

S = SOLDER TAIL WITH
MOUNTING POST
SC = SOLDER TAIL WITH
RETENTION CLIP

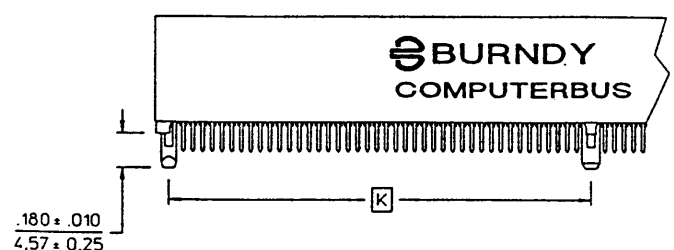
V-GROOVE STABILIZER
CARD SLOT



MOUNTING POSTS
REMOVED FROM VIEW
FOR CLARITY

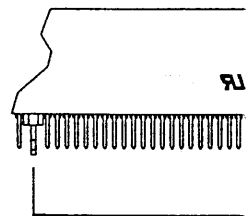


NOTE SOLDER TAIL
OFFSET PATTERN
BEGINS AT PIN 1



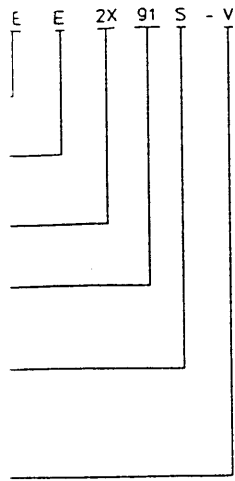
.180 ± .010
4.57 ± 0.25

VIEW B
THREE MOUNTING POSTS VARIATION
(THREE RETENTION CLIPS VARIATION AT SIMILAR LOCATION)



TWO I

CATALOG NUMBER DESCRIPTION



- PLATING DESIGNATION (SEE FINISH)
- DESIGN VARIATION:
- 3 = TWO BOARD MOUNTING DEVICES
- 7 = SAME AS 3 EXCEPT WITH PIN 1 INDICATOR AT ALTERNATE POSITION
- 11 = SAME AS 12 EXCEPT WITH PIN 1 INDICATOR AT ALTERNATE POSITION
- 12 = THREE BOARD MOUNTING DEVICES
- 25 = FOUR CONTACT PAIRS (EIGHT CONTACTS TOTAL) NOT LOADED. SEE SHEET 2
- 27 = OVAL POST LOCATED AT RIGHT END POSITION. SEE SHEET 2
- 30 = FOUR MOUNTING POSTS. SEE SHEET 2

NOTES: UNLESS OTHERWISE SPECIFIED.

- 1 INTERPRET THIS DRAWING IN ACCORDANCE WITH ANSI Y14.5M - 1982
- 2 SEE SHEETS 4, 5, 6, AND 7 FOR RECOMMENDED MATING DAUGHTERBOARD CARD EDGE LAYOUTS AND MOTHERBOARD FOOTPRINTS
- 3 MATING DAUGHTERBOARD MATERIAL:
PC BOARD FR-4 WITH 1 OZ [28.35 GRAMS] MIN COPPER PADS
PAD PLATING: 30 MICRONS [0.76 MICRONS] MIN GOLD PER MIL-G-45204, TYPE 1, CLASS 1, GRADE C, OVER 100 MICRONS [2.54 MICRONS] MIN NICKEL PER 00-N-290

4 SEE SHEET 8 FOR V-GROOVE STABILIZER CARD SLOT INFORMATION

MATERIALS:
BODY: GLASS FILLED THERMOPLASTIC, RATED UL94V-0, COLOR NATURAL

CONTACTS: COPPER ALLOY

RETENTION CLIPS STEEL ALLOY.

FINISH:
CONTACTS: Z14 GOLD FLASH OVER 40 MICRONS [1.02 MICRONS] MIN PALLADIUM-NICKEL OVER 50 MICRONS [1.27 MICRONS] MIN NICKEL UNDERPLATE IN CRITICAL CONTACT AREA AND 100 MICRONS [2.54 MICRONS] SOLDER OVER NICKEL UNDERPLATE ON SOLDER TAILS

PERFORMANCE CHARACTERISTICS:

CONTACT RESISTANCE: (LOW SIGNAL LEVEL)
PER MIL-STD-1344, METHOD 3002.1, 30 MILLIOHMS MAX INITIAL, 10 MILLIOHMS MAX INCREASE THROUGH TESTING

CAPACITANCE: 2 PICOFARADS MAXIMUM AT 1 MEGAHERTZ BETWEEN ADJACENT CONTACTS

CURRENT RATING 1 AMPERE PER CONTACT, 86°F [30°C] RISE ABOVE AMBIENT

CONTACT NORMAL FORCE: 2.64 OZ FORCE [0.73 NEWTONS] MINIMUM

MATING FORCE: PER MIL-STD-1344, METHOD 2013.1, 6 OZ FORCE [1.67 NEWTONS] MAX AVERAGE PER OPPOSING PAIR USING GAUGE PER MIL-G-21097 EXCEPT .062 [1.57] THICK WITH 20° LEAD-IN CHAMFER ANGLE.

DURABILITY: 100 MATING CYCLES WITHOUT PHYSICAL DAMAGE OR EXCEEDING LOW LEVEL CONTACT RESISTANCE REQUIREMENT WHEN MATED WITH RECOMMENDED CARD EDGE.

INSULATION RESISTANCE: PER MIL-STD-202, METHOD 302, CONDITION B, 1000 MEGAOHMS MINIMUM.

THERMAL SHOCK PER MIL-STD-1344, METHOD 1003.1, -67°F TO 185°F [-55°C TO 85°C] FOR 5 CYCLES

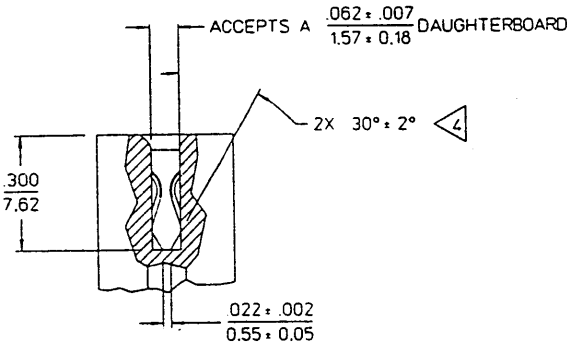
OPERATING TEMPERATURE: -40°F TO 221°F [-40°C TO 105°C]

COMPATIBLE WITH VAPOR PHASE SOLDERING TECHNIQUES

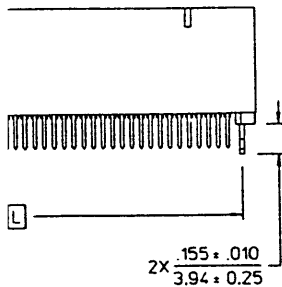
RECOGNIZED UNDER THE COMPONENT PROGRAM OF UNDERWRITER LABORATORIES INC., FILE NO E31151

CERTIFIED BY CANADIAN STANDARDS ASSOCIATION, FILE NO. LR69504

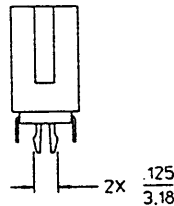
C



VIEW C
SCALE 4 : 1



RETENTION CLIPS VARIATION



INNER CONTACT TAILS
REMOVED FROM VIEW
FOR CLARITY

LINEAR MEASURE: INCH [mm]	
THIRD ANGLE PROJECTION	
- TOLERANCES - UNLESS OTHERWISE SPECIFIED	
NO OF DECIMAL PLACES IN INCHES	INCH [mm]
ONE PLACE	±.1 [±2.54]
TWO PLACES	±.02 [±0.5]
THREE PLACES	±.005 [±0.13]
ANGLES: ±1°	

REV	REVISION DESCRIPTION	BY	CHKD	DATE
COMPUTERBUS™ CARD EDGE CONNECTOR				
CAT NO CEE2X__S_-V__Z14 (SEE TABLE)				
DWG RELEASED TO CENTRAL FILE 07-09-93				
CAGE NO 09922 DON 790 PC 822/829				
© BURNDY CORPORATION 1993				
 BURNDY FCI <small>FRAMATOME CONNECTORS INTERNATIONAL</small>		DRWN	TE	06-08-93
		CHKD	VCE	06-21-93
		DSGN	MY	06-29-93
		MKT	TK	07-07-93
		QC	JY	07-06-93
DRAWING SCALE 2 : 1				
DRAWING NO				REV
SE95508				0
SHEET 1 OF 8				